

shitformation superhighway

sean wayland

6 Cm/G Eb G/D Bb

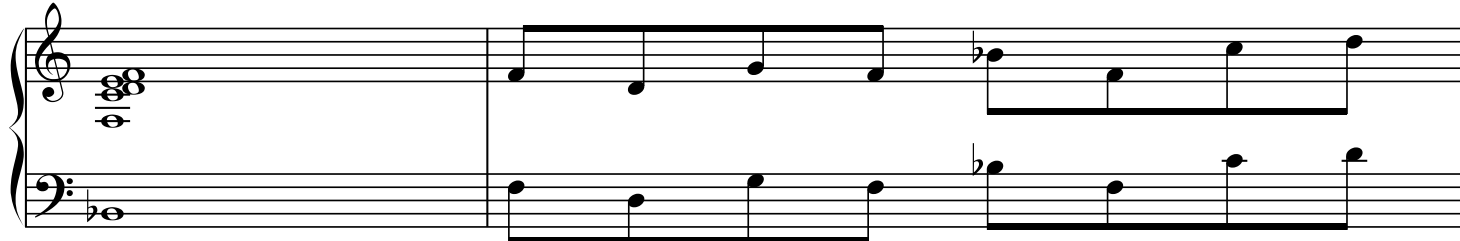
12 C⁷ Eb/Bb Ab⁶

16 Cm Abmaj7

20 Dm Dm

28

DC



30 Cm/G

Gb

Eb m/Bb

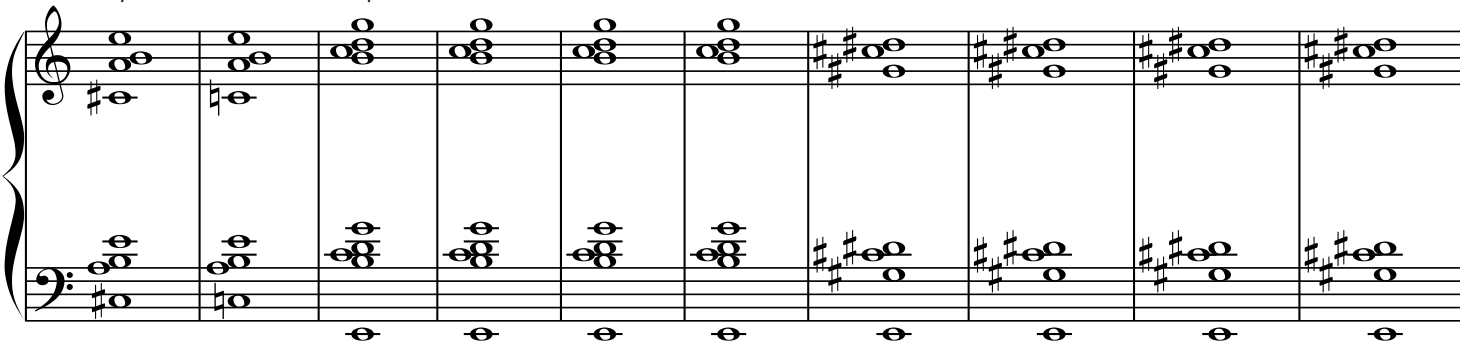
A6%



38 F#m/C#

Am/E

E6%

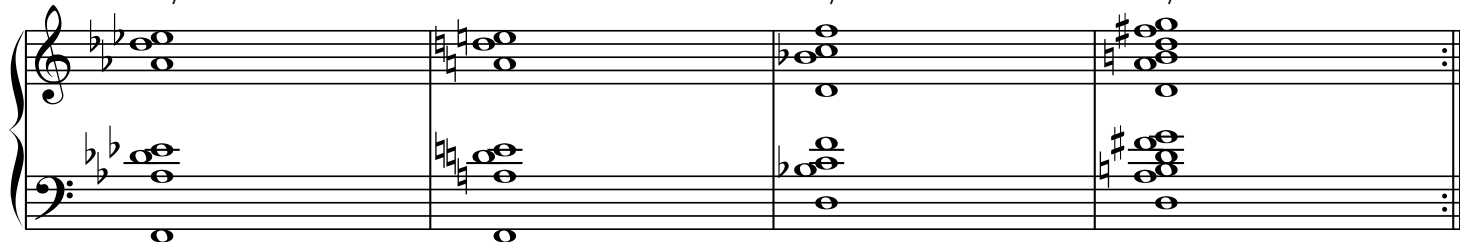


48 Bbm/F

Fmaj7

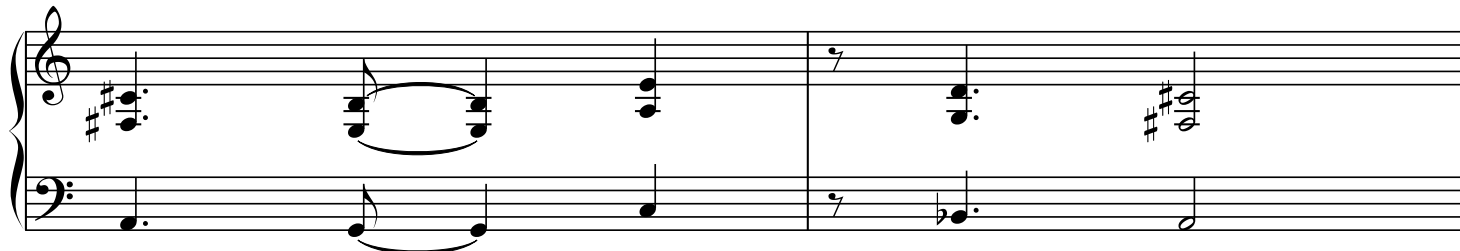
Gm/D

Em/D



52

DS



54

A musical score for measures 54 through 59, written for piano. The score is in 2/4 time and features a key signature of one sharp (F#). The notation is as follows:

- Measure 54:** Treble clef has a half note chord (F#4, A#4, C5). Bass clef has a half note chord (F#2, A2, C3).
- Measure 55:** Treble clef has a half note chord (F#4, A#4, C5). Bass clef has a half note chord (F#2, A2, C3).
- Measure 56:** Treble clef has a half note chord (F#4, A#4, C5). Bass clef has a half note chord (F#2, A2, C3).
- Measure 57:** Treble clef has a half note chord (F#4, A#4, C5). Bass clef has a half note chord (F#2, A2, C3).
- Measure 58:** Treble clef has a half note chord (F#4, A#4, C5). Bass clef has a half note chord (F#2, A2, C3).
- Measure 59:** Treble clef has a half note chord (F#4, A#4, C5). Bass clef has a half note chord (F#2, A2, C3).